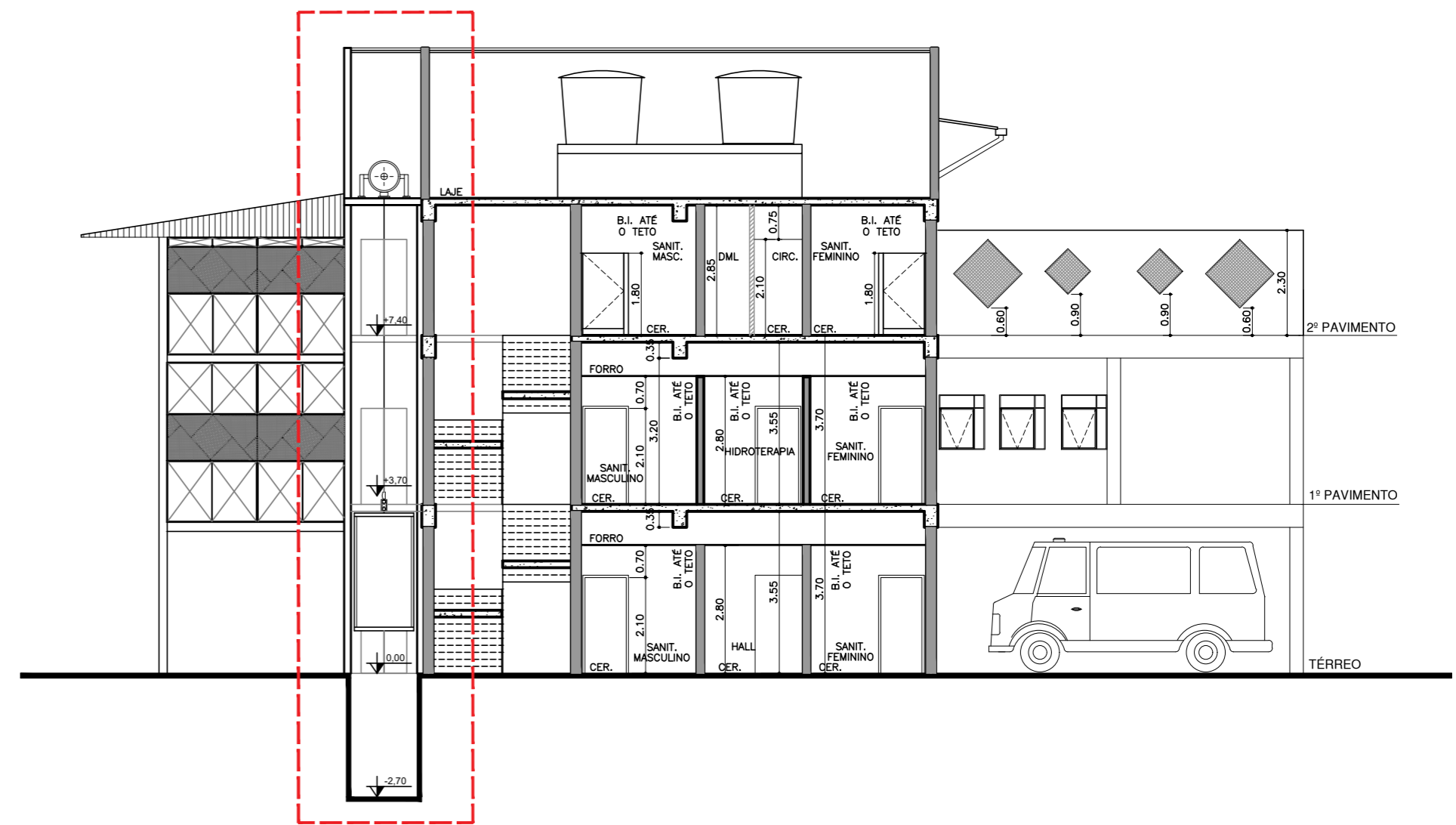



1 **TÉRREO**  
E.1:125



2 **CORTE BB**  
E.1:125

	Projeto: <b>UBS JARDIM HERCULANO</b>	Data: <b>11/10/19</b>
	Assunto: <b>PLANTA PAVIMENTO TÉRREO E CORTE</b>	Escala: <b>1:125</b>
	Endereço: <b>RUA IGNÁCIO DE LIMAS, nº 11</b>	Folha: <b>01/01</b>
	Responsável Técnico: <b>Eng. RUBENS GOMES DE CARVALHO - CREA: 5060052976-9</b>	Assinatura: 